

# Welcome to Vista Clothing

Your Trusted Partner in Ethical Apparel Manufacturing



"Become a Nature" – Committed to Sustainable, High-Quality Production

# Site Plan - 87120 SQFT



- 1 – Main Production Floor (Production floor, Ware House)
- 2 - Administrative Offices (Upper and ground floors)
- 3 – Ground Floor – Reception / Upper Floor – Board Room
- 4 – Temple
- 5 – Cafeteria
- 6 – Sanitary Facilities
- 7 – Generator room
- 8 - Loading Bay
- 9 – Guard Room and Drivers waiting area
- 10 – Transformer
- 11 – Proposed factory expansion building (Phase 2)

# History

- Commence operations at the year 2017
- Man power – 07 Employees
- No of Machines - 04
- Capacity – 4000 Crew Neck T-shirts



# Current Profile

- ❑ Total Man Power – Total 340 Employees 15% male, 85% female
- ❑ 210 machine operators
- ❑ Total Capacity
  - ❑ 400,000 pcs/month for styles similar to Crew Neck T-shirts & kids top
  - ❑ 37000 Production Hours per Month
- ❑ Number of Machines – 240
- ❑ Phase 2 Expansion
  - ❑ 800,000 pcs/month



Galaxy S24 Ultra

# Customer Portfolio

intimissimi

Italian lingerie

TEZENIS

CALZEDONIA

Miss Mary

carter's®

IUMAN

# Product Capability



T- Shirts



Ladies Top



BOD



Gents Brief



Women's Shorts



Women's Night Wear



Women's Lingeries



Women's Skirts

# Factory Standard

- ❑ On track for SMETA compliance certification in 2026.
- ❑ On track for WRAP compliance certification in 2026.
- ❑ High-end quality for premium buyers with strict requirements.
- ❑ Highest salaries in the area, plus lifestyle and fun programs.



# Factory Compliance

- ❑ Adhering to Sri Lankan labor laws and international standards.
- ❑ On track for SMETA compliance certification by end of 2025.
- ❑ Child-safe production with Groz-Beckert Needle Disposing Trolley to prevent contaminants.
- ❑ Robust safety systems: fire evacuation protocols, extinguishers, and emergency procedures.
- ❑ High-quality standards meet demands of premium buyers (e.g., Carters, Intimissimi)



# Become a Nature

- ❑ Nature-friendly manufacturing with renewable energy focus. In year 2028 we will be 80% powered by renewable energy with our propose rooftop solarpane power plant
- ❑ Annual Coconut Plant Dansala (free giveaways) contribute to planting coconut trees.
- ❑ Donated 40M+ LKR for monastery kitchen (5,000-6,000 meals capacity per session).

for community.



# People Development

- ❑ Highest salaries in the area, plus lifestyle and fun programs.
- ❑ Weekly 2-hour Dhamma sessions for spiritual motivation.
- ❑ “Best place to work” with a focus on employee well-being.
- ❑ Smart Leader Program
- ❑ Machines Upgrade Training
- ❑ Skill Development Trainings



# Ethical & Responsible Manufacturing

- We are currently preparing for:
  - SMETA Audit
  - WRAP Certification
  
- Our ethical framework includes:
  - Fair wages (highest in the area)
  - No child or forced labor
  - Written employment contracts
  - Transparent HR policies
  - Clients are welcome to conduct nominated audits.



# Employee Welfare & Workforce Stability

We believe stable employees create stable production.

## ❑ Our welfare system includes:

- ❑ Annual performance bonus
- ❑ Employee loan program
- ❑ Welfare shop (goods at wholesale cost)
- ❑ Yealy full health check funded by company
- ❑ Continuous fire safety training
- ❑ Skill development & leadership training programs
- ❑ Employee Engagement & Workplace Culture (Annual company celebration event / Annual employee recreational trip / Team-building activities / Performance recognition programs / Special Sudden Event for special days like valentine's , women's day)

- ❑ We also maintain a calm and value-driven work environment that promotes discipline, mutual respect, and long-term retention.



# Safety & Compliance Infrastructure

We believe stable employees create stable production.

- Continuous fire drills
- Emergency evacuation protocols
- First Aid and trained safety officers
- Needle control & metal contamination prevention
- PPE usage enforcement

Safety is monitored regularly and documented.



## CSR & Community Impact

Vista Clothing actively supports community development:

- Construction of a fully modern monastery kitchen (6,000 meal capacity)
- Ongoing auditorium construction (6,000 seating capacity)
- Coconut tree plantation initiatives
- Donation programs for employee family emergencies

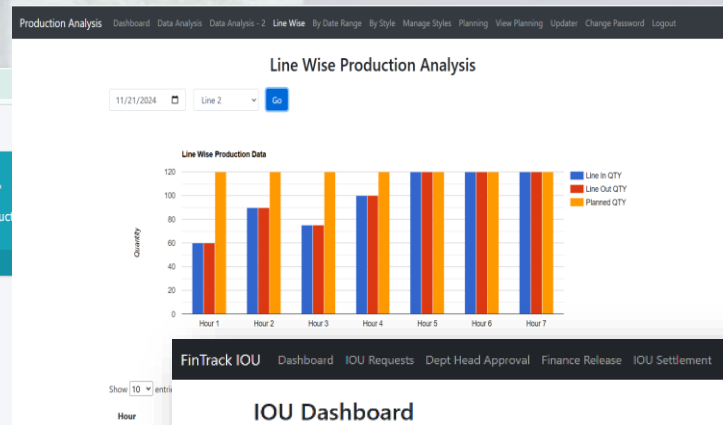
Our CSR model strengthens long-term social sustainability.

# Smart Manufacturing

- ❑ ceyMX ERP for inventory, production, order, and finance management.
- ❑ Real-time data ensures efficiency and accuracy.
- ❑ Streamlined processes for faster delivery and reliability.

The screenshot shows the ceyMX ERP Dashboard. The top navigation bar includes 'Ceymx 0.0.1' and 'admin'. The dashboard features several key performance indicators (KPIs) in colored boxes: Total Orders (43), Total SR (41), In Production (2), and Production (41). Below these are 'Reconciliation Completed' (0), 'Shipped' (0), and 'Completed' (0). A table titled 'All Orders' lists order details:

Order ID	Buyer	Style	Season	Order Qty	View	Edit
VC_0001	Omegaline Pvt Ltd	CMU12HL-490J-6849_VC0001		6849	<a href="#">View</a>	<a href="#">Edit</a>
VC_0002	Omegaline Pvt Ltd	CLU12G-5227-1440_VC0002		1440	<a href="#">View</a>	<a href="#">Edit</a>
VC_0003	Omegaline Pvt Ltd	CMU19A-001-300_VC0003		300	<a href="#">View</a>	<a href="#">Edit</a>
VC_0004	Omegaline Pvt Ltd	CLU23G-800-600_VC0004		600	<a href="#">View</a>	<a href="#">Edit</a>
VC_0005	Omegaline Pvt Ltd	CLU23G-132J-2230_VC0005		2230	<a href="#">View</a>	<a href="#">Edit</a>



The screenshot shows the FinTrack IOU Dashboard. The top navigation bar includes 'FinTrack IOU', 'Dashboard', 'IOU Requests', 'Dept Head Approval', 'Finance Release', 'IOU Settlement', 'Finance Accept', 'Reports', and 'Welcome, Admin Prasad'. The dashboard features several key metrics in colored boxes: Total IOU Requests (2), Dept Head Approvals (1), Finance Approvals (0), Fund Released IOU (1), Settled IOU Requests (1), To be Settled (Count) (0), To be Settled (Amount) (Rs. 0.00), and Overdue IOU (Rs. 10,000.00). Below these are two charts: 'Monthly IOU Request Trend' (a line chart) and 'IOU Requests by Status' (a pie chart).

Status	Count
Hending	2
Released	1
Dept Approved	0
Settled	1

# Why Partner With Vista Clothing?



**We are not a transactional supplier.**

**We are a growth partner for brands seeking stability and scale.**

# Let's Collaborate

Ready to partner with an ethical manufacturing leader? Contact us today for a quote or factory tour.

## Contact for New Inquiries

Mr.Pradeep Samantha

+94 77 731 9796

[info@vistaclothing.lk](mailto:info@vistaclothing.lk) / [yohanv@vistaclothing.lk](mailto:yohanv@vistaclothing.lk)

Proprietor: Mr. Pradeep Samantha [pradeeps@vistaclothing.lk](mailto:pradeeps@vistaclothing.lk)

Email : [info@vistaclothing.lk](mailto:info@vistaclothing.lk)

Phone : +94 77 731 9796 , +94 37 2248 926

Address : Vista Clothing, Panavitiya Road, Matiyagane, Sri Lanka.

## Google Map Location:

<https://maps.app.goo.gl/TxVpGzB3cc92sJQE6>



Scan me for google location

